



**VIEWPLUS®**

**VP Elite and VP Premier  
Embossing User Manual  
Revision: 2021 May**

# Table of Contents

- I. Introduction .....3
  - A. Preface .....3
  - B. Compliance Statement .....4
  - C. Safety Instructions .....6
- II. General Information .....7
  - A. Specifications .....7
  - B. System compatibility .....8
- III. Printer Setup .....8
  - A. Unpacking .....8
  - B. Cable Attachment .....8
  - C. Alignment.....10
  - D. Software Installation .....10
- IV. Printer Properties .....14
  - A. Introduction .....14
  - B. Printer Properties .....14
    - B.1 Device settings tab.....14
    - B.2 Service tab .....19
  - C. Printing Preferences .....26
    - C.1 Layout tab .....27
    - C.2 Paper/Media tab.....27
    - C.3 Tiger tab.....31
- V. Operator Panel .....34
  - A. Functions .....34
  - B. Status Lights.....35
  - C. Error Alerts.....35
- VI. Paper Handling .....37
  - A. Paper Loading .....37
  - B. Paper Jams .....38
- VII. Braille, Translation and Printing .....39
  - A. ViewPlus Tiger Software Suite.....39
  - B. Fonts .....39

C. Math and Braille .....	40
D. Printing .....	40
VIII. Software Packages.....	41
A. Software Packages.....	41
IX. Training, Warranty, Maintenance and Support.....	42
A. Training.....	42
B. Maintenance.....	42
C. Support .....	42
D. Warranty.....	42

## I. Introduction

### A. Preface

#### **VP Elite and Premier Embossers Powered by Tiger Owner's Manual**

Congratulations on purchasing a VP Elite or Premier Braille and tactile graphics embosser! This manual will introduce you to basic information regarding your new embosser.

Patented roller-die technology means ViewPlus embossers print at a 20 dots-per-inch graphic resolution and automatically convert colors and gray scale into variable dot heights. The sound-absorbing roller die makes Powered by Tiger embossers much quieter than other Braille printers.

ViewPlus embossers use the standard Windows printer driver to mix text and graphics in mainstream Windows software like Word and Excel. Use the computer to adjust settings and preferences. Print documents exactly how they appear on the screen.

Use the Tiger Software Suite to take braille translation and tactile graphics to a new level. The Tiger Formatter is a Microsoft add-in that gives you advanced tools for translation and embossing. Tiger Designer enables basic editing of documents for quick drawing and braille needs. Translator serves as a basic translation tool for almost any Windows software- including PowerPoint and Corel Draw.

Keep up to date by checking the ViewPlus Technologies, Inc. webpage at:

<http://www.ViewPlus.com>

**VP Elite Model Number:  
VPTT1022-00  
VP Premier Model Number:  
VPTT1010-00  
USER MANUAL**

## **B. Compliance Statement**

### **FCC Compliance Statement (USA)**

This equipment has been tested and found to comply with the limits for a Class B digital device, pursuant to Part 15 of the FCC Rules. Operation is subject to the following two conditions: (1) this device may not cause harmful interference, and (2) this device must accept any interference received, including interference that may cause undesired operation. If this equipment does cause harmful interference to radio or television reception, which can be determined by turning the equipment off and on, the user is encouraged to try to correct the interference by one or more of the following measures:

- Reorient or relocate the receiving antenna.
- Increase the separation between the equipment and receiver.
- Connect the equipment to an outlet on a circuit different from that to which the receiver is connected.
- Consult the dealer or an experienced radio/TV technician for help.

FCC Warning: Changes or modifications not expressly approved by the party responsible for compliance could void the user's authority to operate the equipment.

Note the following:

- The use of a non-shielded interface cable with the referenced device is prohibited.
- The length of the power cord must be 3 meters (10 feet) or less.

This unit is also intended for connection to IT distribution systems.

### **Compliance Statement (Canada)**

This digital apparatus is in conformity with standard NMB-003 of Canada.  
Cet appareil numérique est conforme à la norme NMB-003 du Canada.

### **Compliance Statement (Germany)**

Bescheinigung des Herstellers/Importeurs: Hiermit wird bescheinigt, dass der Drucker der Maschinenlärminformationsverordnung 3. GSGV, 18.01.1991 entspricht: Der höchste Schalldruckpegel beträgt 70 dB(A) oder weniger gemäß EN27779-1991.

### **Compliance Statement (Europe)**

Warning: This product meets the interference requirements of EN55022. In a domestic environment, this product may cause radio interference in which case, the user may be required to take adequate measures.

## Compliance Statement (Korea)

This apparatus complies with CISPR22 requirements.

## International Compliance



EN55022 ClassB:1998	Emissions series
EN55024:1998	Immunity characteristics
EN61000-3-2:2000	Power line harmonics
EN61000-3-3:2001	Power line flicker
EN61000-4-2:2001-04	Electrostatic discharge
EN61000-4-3:2002-09	Radiated susceptibility
EN61000-4-4:2004	Electrical fast transient/burst
EN61000-4-5:2005-11	Surge
EN61000-4-6:2004-11	Conducted immunity
EN61000-4-8:2001-03	Magnetic Field Immunity
EN61000-4-11:2004	Input voltage interruptions/DIPS

## C. Safety Instructions

Read all of these safety instructions before using the embossing printer. In addition, follow all warnings and instructions marked on the embossing printer itself.

- Do not place embossing printer on an unstable surface.
- Do not place embossing printer near a radiator or heat source.
- Do not block or cover slots and openings in the embossing embosser's cabinet; do not insert objects through slots.
- Use only the type of power source indicated on embossing embosser's label.
- Connect all equipment to properly grounded electrical outlets.
- Do not use frayed or damaged power cord.
- The use of an extension cord with the embossing printer is not recommended.
- Unplug embosser before cleaning it; always clean it with a piece of damp cloth only.
- Do not spill liquid into embossing printer.
- Except as specifically explained in the user's manual, do not attempt to service the embosser by yourself.
- Detach the embosser from power source and refer to qualified service personnel under the following conditions:
  - If the power cord or plug is damaged.
  - If liquid has entered the embosser.
  - If the embosser has been dropped or the cabinet is damaged.
  - If the embosser does not operate properly or exhibits a distinct change in performance.
- Only adjust those controls that are covered by the operating instructions.

## II. General Information

### A. Specifications

Print Speed	Up to 200 CPS double-sided
Tactile Resolution	20 DPI
Tactile Graphic Dot Heights	7 steps for color representation
Braille Dot Heights	Adjustable in 3 heights
Paper Feed Method	Front-load tractor feed
Paper Width	4 to 12 inches (100 to 305 mm)
Paper Weight	Adjustable from very thin (copier type) paper to heavy cardstock/plastic (75 to 230 g/m <sup>2</sup> )
Connectivity	USB (1.1, 2.0), Ethernet
Power Supply	Voltage: 100 to 230 VAC (+ 10% / - 15%) Frequency: 50/60 Hz (± 1 Hz)
Power Consumption	Standby: 22 W Average Embossing: 195 W Heavy Embossing: 235 W
Fuses	5 A, 250 V slow blow long time lag 5x20mm
Embosser Dimensions	
Width	22.3" (570 mm)
Depth	13.8" (350 mm)
Height	8.8" (220 mm)
Weight	60 lb (27 kg)
Connectivity	USB and Ethernet
Operating Conditions	
Operating Temperature	59 to 95 °F (15 to 35 °C)
Storage Temperature	-4 to 158 °F (-40 to 70 °C)
Relative Humidity	20 to 80% RH (non condensing)
Duty Cycle	35,000 pages per month
Lifetime	At 30% of duty cycle, 5 years or 10,000 hours

## **B. System compatibility**

The Windows driver for the Elite and Premier is compatible with operating systems from Windows XP to current Windows versions, both 32- and 64-bit systems.

A Mac OS printer driver is also available. The printer driver installation allows to use Braille fonts for uncontracted Braille translation as described in section VII.B. regarding system fonts that install with the printer driver.

## **III. Printer Setup**

### **A. Unpacking**

- Remove the embosser and all its accessories from its packaging.
- Inspect the ViewPlus embosser and its packaging for any damage.
- **Save the packing material and box.** If any damage occurred during shipping, most shipping companies require the box and the packing material in order to settle the insurance claim. The packing material must also be used to ship the ViewPlus embosser for warranty maintenance service.
- Follow the VP Elite and Premier Setup Instructions included with your other materials.

### **B. Cable Attachment**

#### **Power connection**

The VP Elite and Premier embossers have a power module on the back side, containing a power socket, on/off switch, and a compartment holding two fuses. A sticker next to the power module indicates what specific fuses are required for the embosser. If the embosser will not power on, it might be necessary to replace the fuses.



*Shows the power module in the back of the embosser*

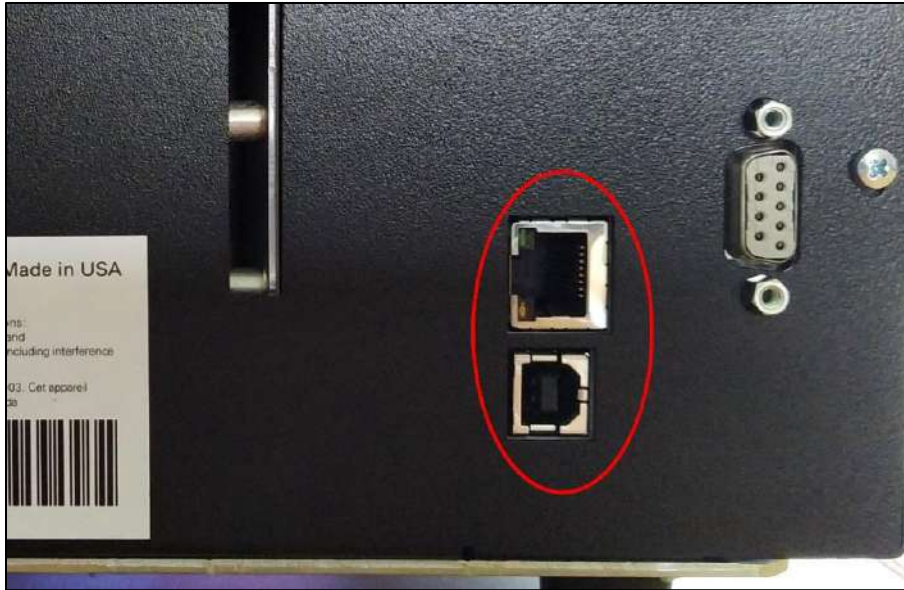
Insert the power cable plug into the VP Elite or Premier power connector and the other end of the power cable into a grounded outlet or a surge protector (recommended).

Turn the embosser on by pressing the power switch to the On or "I" position. The part of the switch towards the top of the printer should be pressed down.

### **Data cable**

A USB printer cable was included in your box. To use it, attach the flat end of the USB data cable to the USB port of the host computer or print server, and then attach the other end to the embosser. The USB connection is located on the back side of the embosser below the LAN connection.

You may also use a LAN cable to connect the ViewPlus Elite or Premier to your network. The embosser is not shipped with a LAN cable. To use this connection method, attach one end of a LAN cable to the top connection port on the back of the ViewPlus Elite or Premier and attach the other end to a network data port.



*Shows the USB and LAN connectors in the back of the embosser*

## C. Alignment

The VP Elite and VP Premier embossers automatically check alignment for the tactile dots at the beginning of each print job. If the embossed output of your embosser seems to be incorrectly aligned, please ensure that the embosser is on a flat, even surface. It is possible to bend the body of the embosser and cause the ViewPlus embosser to be out of alignment. After a paper jam, it is also possible for the embosser to be incorrectly aligned if you simply continue to print. Start a new print job, allow the VP Elite or Premier to automatically align, and check the new document to see if the alignment is good.

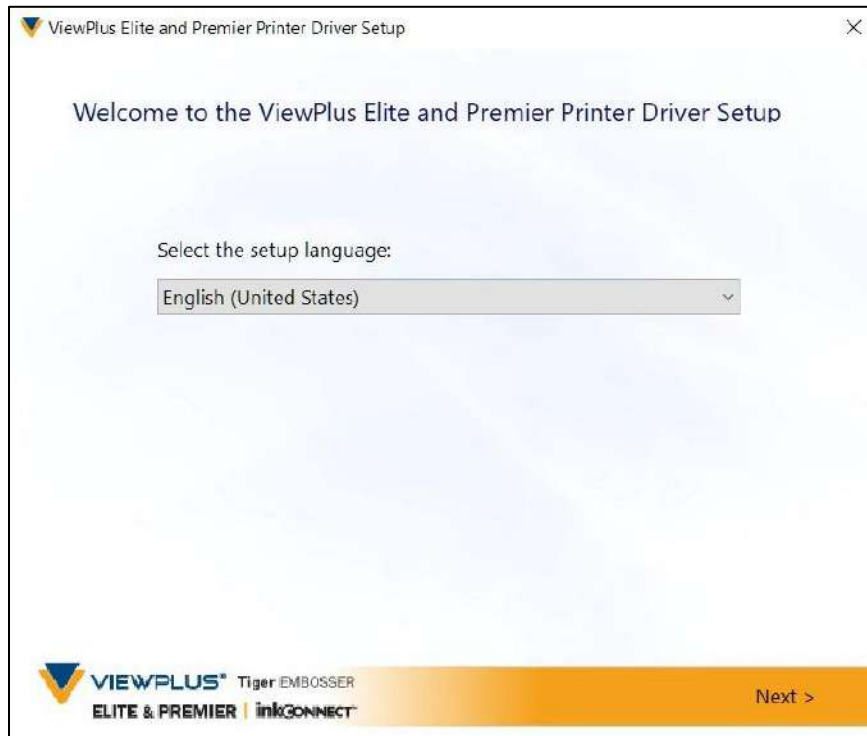
If the embossed dots do not seem to be aligned, please contact ViewPlus Support.

## D. Software Installation

Included with your VP Elite or Premier is a USB flash drive, that contains the Windows printer driver as well as the ViewPlus Tiger Software Suite (TSS).

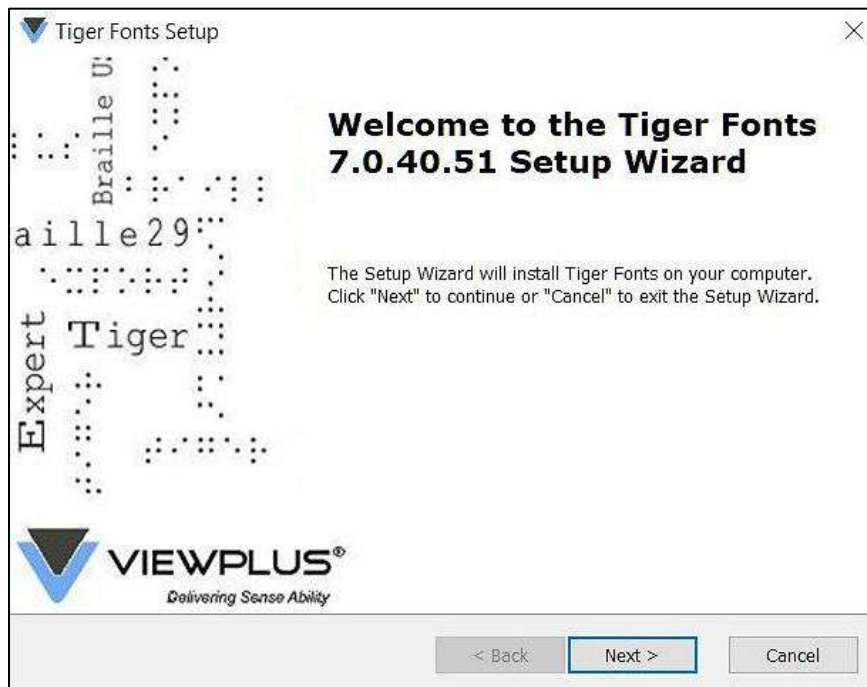
**NOTE: DO NOT CONNECT YOUR ELITE OR PREMIER TO THE COMPUTER DURING INSTALLATION OF THE PRINTER DRIVER, OR TURN IT OFF WHEN ALREADY CONNECTED.**

Run the driver setup from the usb, or download the current Elite and Premier driver from the ViewPlus website [www.viewplus.com](http://www.viewplus.com). Follow the instructions from the installation program.



*Shows printer driver installation welcome screen*

The fonts installer will run parallel to driver install. It will pop-up in separate window. Next after welcome screen you will have the chance to select fonts for certain languages to install if not all.



*Shows font installer welcome screen*

If network installation of the Columbia embosser is desired, please pause at the screen, asking whether to run the network installation utility and DO NOT click 'Finish' until the printer is connected and switched on.



*Shows printer driver network installation screen*

If no network installation is desired, finish the driver installation, if network installation is desired DO NOT click finish on the last screen of the driver installation. In both cases, connect the VP Elite, or Premier to the computer via USB now, and turn it on. The system should automatically detect the embosser and add it to the system control panel under 'Devices and Printers'.

It is possible that Windows will not detect the printer on the first try. In this case, just unplug and plug it back in to the same USB port of your computer. If Windows is still not detecting the embosser try another USB port.

For network installation, connect a LAN local network cable to the ViewPlus embosser after the printer has been locally detected via USB. Before clicking 'Finish' now, make sure the check box 'Run the Network Printer Installation Utility' is checked on the last printer driver installation screen. The network connection for the device should now install automatically.

If you have not used the network installation during driver install, the Network Printer Installation Utility can also be started separately at any time from the Windows start menu, under ViewPlus program folder.

After your VP Elite, or Premier printer driver installed successfully, you may also install the ViewPlus Tiger Software Suite from the included USB flash drive. For installation, please follow the instructions from the setup program. For use of the Tiger Software Suite (TSS) please refer to the TSS user manual.

### **Printer Driver and Device Removal**

If you wish to remove the ViewPlus printer driver application from your computer, you can either run the printer driver setup program again, which will give you the option to remove the driver, or use Windows uninstall option under system settings for 'Programs and Features', or 'Apps'.

Deleting the VP Elite, or VP Premier device appearance under system control panel 'Devices and Printers' will not remove the printer driver installation from your computer, but just the instance of the device assigned to a specific port.

Sometimes, Windows will automatically add instances of the same device under system devices and printer, which would result in showing 'Copy 1' or further copies available from the same printer. If this is not desired, and you have trouble assigning your print jobs to the correct printer device name, please go ahead, unplug the ViewPlus printer and remove all Elite, or Premier printer devices under system control for devices and printers. Now plug the ViewPlus printer back in, and Windows should automatically add one instance of the printer again, which will then be assigned to the correct port.

## IV. Printer Properties

### A. Introduction

The ViewPlus printer driver uses a standard Windows printer driver interface to provide user access to settings and options of ViewPlus embosser from a local or networked computer. Printer properties are accessible through Windows system settings 'Devices' -> 'Printers & scanners', or control panel 'Devices and Printers' respectively. Select ViewPlus Elite, or ViewPlus Premier in the list of printers and get to printer properties through the context menu. Select 'Manage' and find printer properties on next page when accessing through Windows system settings 'Devices' -> 'Printers & scanners', or use right mouse click context menu when accessing through control panel 'Devices and printers'.

Printer properties contain general device settings such as for connectivity, sharing, and security, but also ViewPlus specific settings for legacy mode operation and service procedures. Note, that these options are only activated when your ViewPlus printer is locally connected through USB and switched on.

Always click on the 'Apply' button to activate changes.

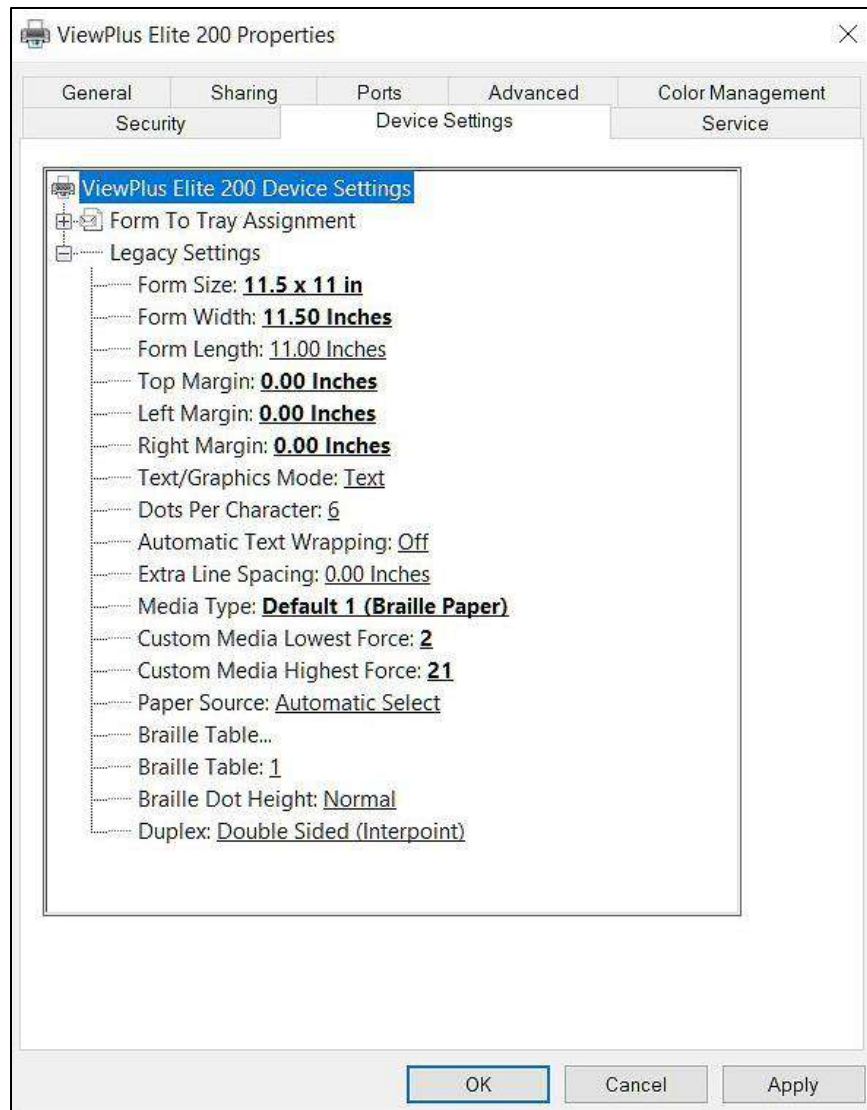
### B. Printer Properties

#### B.1 Device settings tab

The device settings are properties that are stored within the internal memory of the printer. Therefore, the printer needs to be connected and turned on. To activate any changes, always click on the 'Apply' button when done with the settings. The printer will beep once to confirm the receiving of the changed settings.

The settings you find under 'Legacy settings' will control the embosser's output when printing to the Elite, or Premier from programs that do not use the Windows printer driver, including some Braille programs and note taker devices.

See a picture of the VP Elite, VP Premier printer properties device settings tab below. Use the following descriptions to make your selections.



*Shows Device Settings Tab*

- **Form To Tray Assignment**

**Tractor Feed:** The first section of the Device Settings tab controls the Elite or Premier's 'tray assignment'. Feel free to ignore this as it is a Windows default item that can't be hidden, but it does not have any relevance for your printing.

- **Legacy Settings**

**Form Size:** Select a standard page size, or select Custom to set the page size manually.

**Form Width:** This field shows the page width. For standard page sizes, this field is informational only. If the Form Size is set to Custom, this field is editable.

**Form Length:** This field shows the page length. For standard page sizes, this field is informational only. If the Form Size is set to Custom, this field is editable.

**Top Margin:** Set the top margin to be used when printing in legacy mode.

**NOTE: IF YOU ARE PRINTING FROM AN APPLICATION THAT SENDS MARGIN INFORMATION WITH THE PRINT JOB, SET THE TOP MARGIN TO 0.**

**Left Margin:** Set the left margin to be used when printing in legacy mode.

**NOTE: IF YOU ARE PRINTING FROM AN APPLICATION THAT SENDS MARGIN INFORMATION WITH THE PRINT JOB, SET THE LEFT MARGIN TO 0.**

**Right Margin:** Set the right margin to be used when printing in legacy mode.

**NOTE: WHEN EMBOSSING DOUBLE SIDED, ADJUST THE LEFT AND RIGHT MARGIN SETTINGS ACCORDING TO THE REQUIREMENTS FOR THE FRONT SIDE OF THE PAGE. IF THE LEFT AND RIGHT MARGINS ARE SET DIFFERENTLY, THE MARGINS WILL BE APPLIED AS BINDING MARGINS, MEANING MEANING THEY WILL BE MIRRORED TO THE BACK SIDE OF THE PAGE WITH THE RESULT THAT THE SAME AMOUNT OF MARGIN IS APPLIED TO THE SAME EDGE OF THE PAPER ON BOTH SIDES.**

**Text/Graphics Mode:** Select Text mode if your legacy document contains text. If the document is a graphic, select Graphics mode to remove the space between Braille lines so that dots may be printed in an even grid.

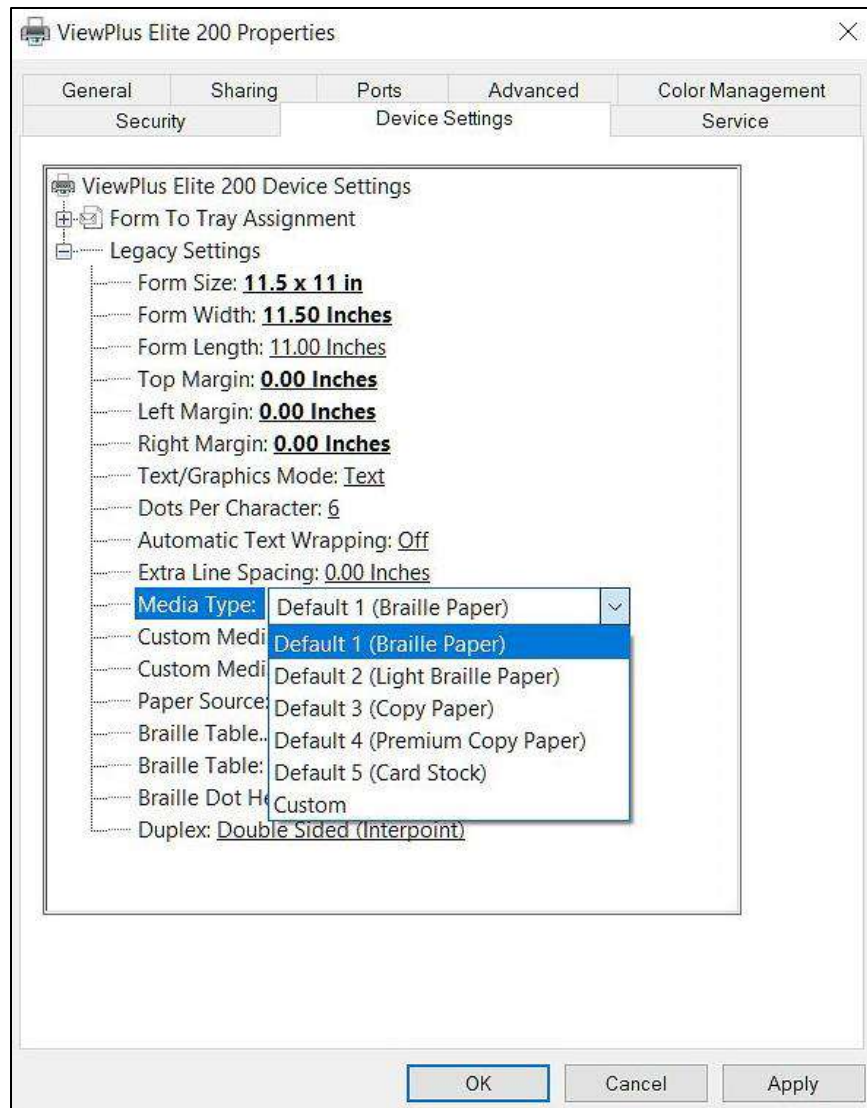
**Dots Per Character:** Select 6 or 8 dots per character.

**Automatic Text Wrapping:** Select 'On' if lines in the document are longer than will fit on one printed line and you do not wish the lines to be truncated. If the document is formatted correctly for the page size and margins you are using, or if you do not wish to have long lines wrapped to the next line, select 'Off'.

**Extra Line Spacing:** Set the amount of extra space desired between Braille lines. This setting can only be set in multiples of 0.05 inches.

**Media Type:** The media type setting will define the hammer force that is applied when forming the dots in the paper (media). The stronger the media, the higher the punch force needs to be to form readable dots. A list of presets for certain media types is available, but a 'Custom' setting is also possible if the presets will yield satisfactory embossing results.

**NOTE: THE MEDIA TYPE THAT YOU CHOOSE HERE WILL BE SAVED TO THE EMBOSSER INTERNAL MEMORY, AND WILL REFER TO AS 'Printer Setting' WITHIN MEDIA TYPE SELECTION OF WINDOWS PRINTING PREFERENCES (see section IV.C. below).**



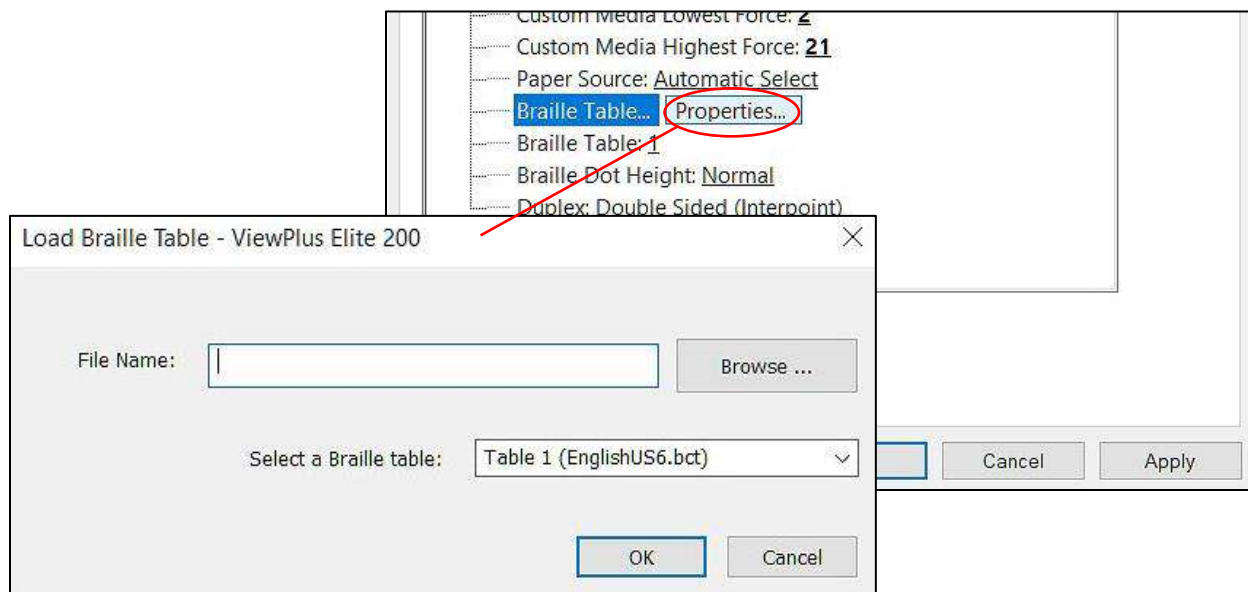
*Shows Device Settings Tab - Media Types*

**Custom Media Lowest Force:** Enter the punch force value to be used for the lowest dots on a custom media type.

**Custom Media Highest Force:** Enter the punch force value to be used for the highest dots on a custom media type.

**Paper Source:** There is only one possible source and it doesn't matter whether to choose automatic or tractor feed option here.

**Braille Table...:** The VP Elite or Premier can store up to six Braille tables. Click on 'Properties' to open a dialog which allows you to load the tables to the Elite or Premier internal memory.



*Shows Braille Table Properties in Device Settings*

The dialog provides a 'Browse...' button to open a file browser dialog. The file browser will point to directory where Braille tables are stored from ViewPlus installation, but you can browse to a different location if needed. The custom braille table can be chosen as file type \*.bct, \*.rbt, or \*.dis.

Confirming your choice with 'Open' in file browser window will yield to display of the Braille table file name in 'Load Braille Table' dialog.

From list in 'Select a Braille table', you can choose at what storage position the table should be stored in embosser on-board memory.

If a table was stored to that memory position before, it will be indicated by name in brackets behind list number, like 'EnglishUS6.bct' is shown here behind list number 1.

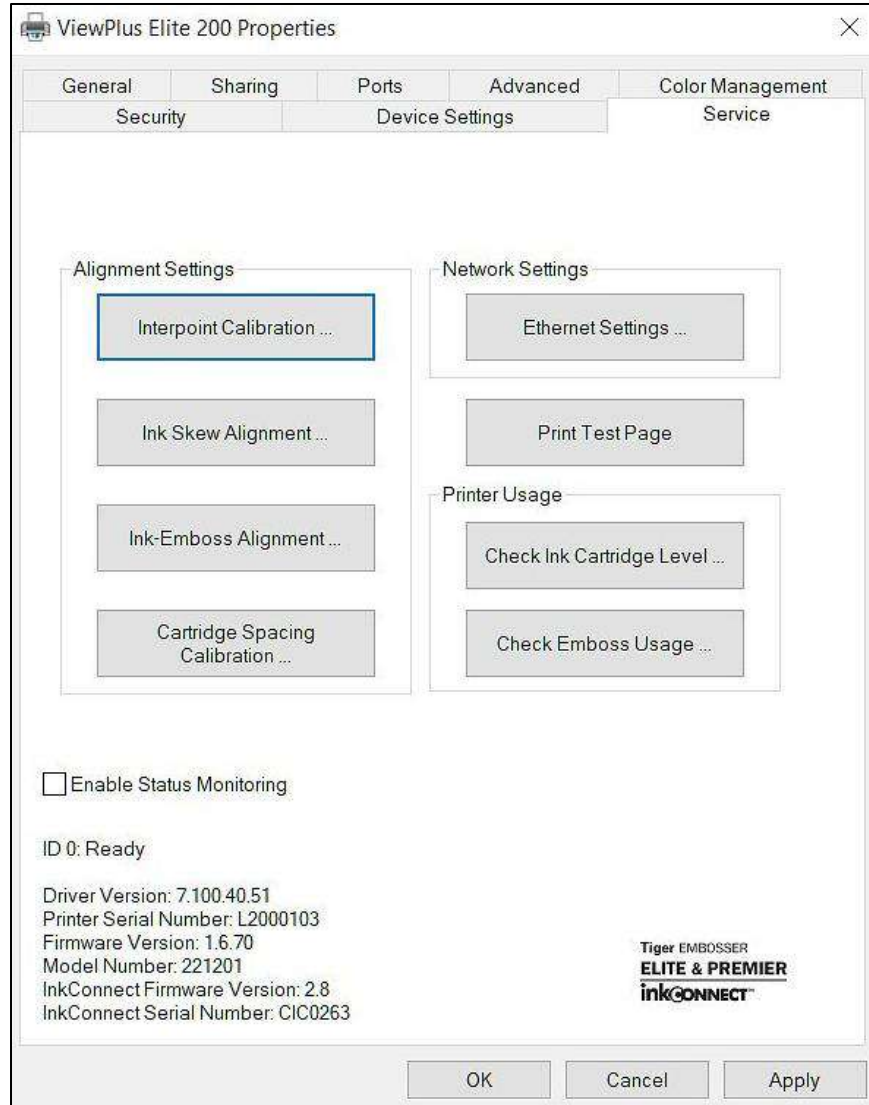
**Braille Table:** Define which Braille table to use when printing by selecting corresponding list number. The list number is associated with a Braille table as explained in previous item for loading Braille tables to embosser memory.

**Braille Dot Height:** Select 'Low', 'Normal', or 'High' to control how tall Braille dots will print. This can be adjusted to the preference of the tactile reader.

**Duplex:** Choose whether to print single sided or double sided (interpoint).

## B.2 Service tab

The Service tab of the printer properties dialog window provides information about the connected VP Elite or Premier at the bottom left. When contacting ViewPlus Support, please have the driver version, printer serial number, and firmware version available. Furthermore, it provides several servicing functions for your VP Elite or Premier.

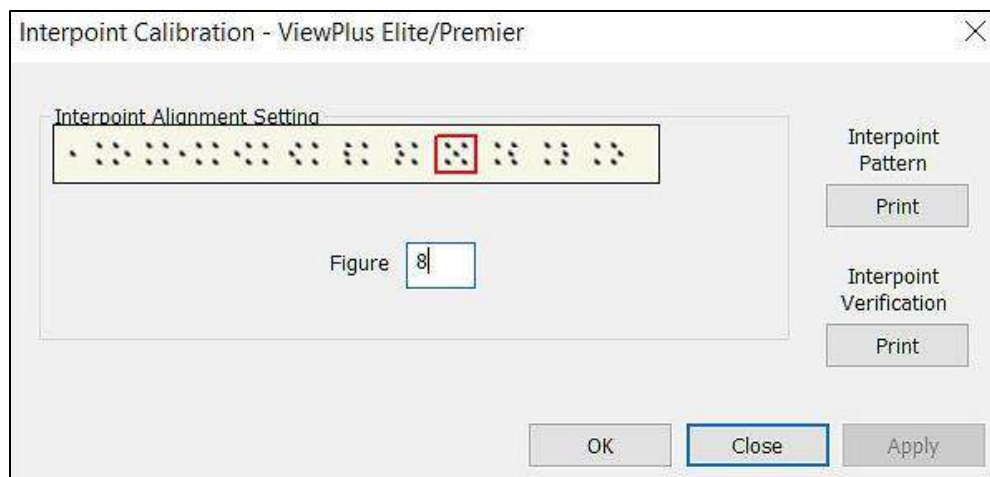


*Shows Printer Properties Service Tab*

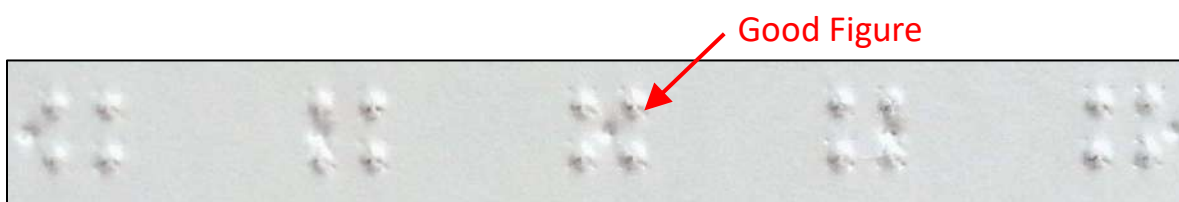
- **Alignment Settings**

**Interpoint Calibration** – This button brings up a new dialog to allow the user to adjust the horizontal dot placement for interpoint printing (the placement of dots on the back side of the paper in respect to the placement of dots on the front side). Use button 'Print' on 'Interpoint Calibration' dialog window to initiate the print of a test pattern on your connected ViewPlus embosser.

The calibration pattern is 11 cells of four dots on the front side and 11 cells of one dot on the back side. The alignment of front and back against each other is varying across the page. With the four-dot cells facing up, find the cell with the best centered back dot. Count the number of this cell starting with 1 at the very left cell. Enter the number of the cell with best aligned center back dot in entry field 'Figure' of the dialog box.



*Shows Interpoint Calibration dialog window*



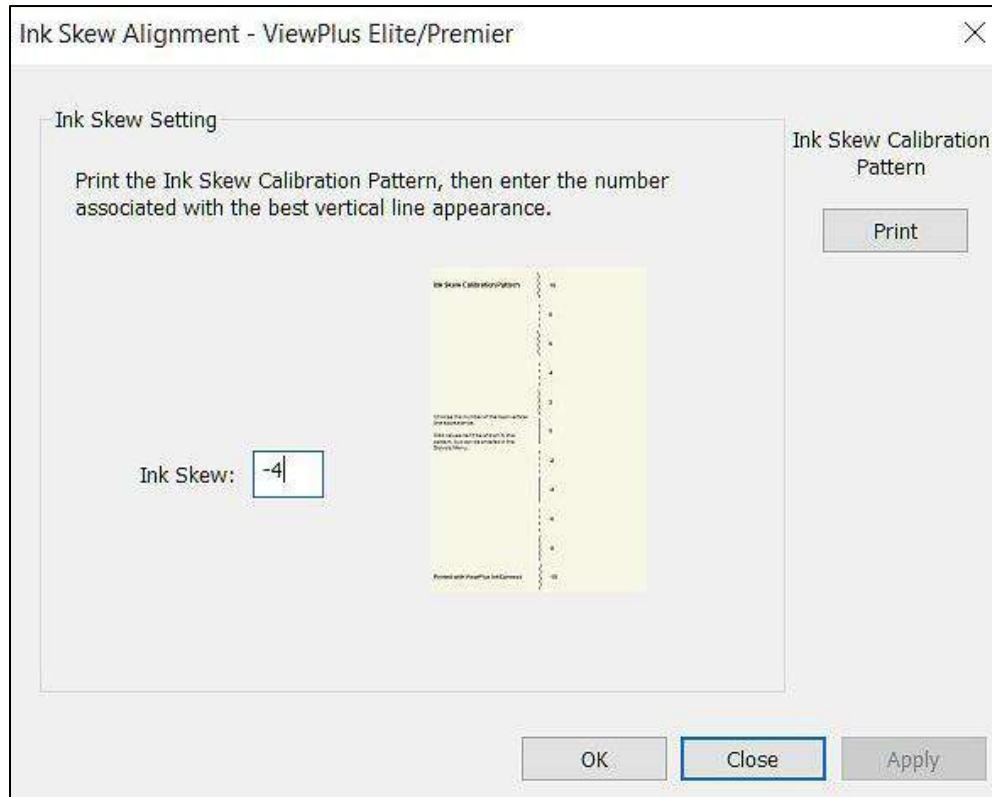
*Shows section of test print with good aligned dot pattern*

**Ink Skew Alignment** – This button is only available if a ViewPlus InkConnect is attached to the Elite or Premier. This function allows the user to adjust the skew of the ink cartridges so that perfectly straight vertical ink lines may be printed. Use button 'Print' on 'Ink Skew Alignment' dialog window to initiate the printing of a test pattern.

The pattern will show 11 samples of a vertical line. The samples are labeled with numbers to the right. Find the vertical line that is printed closest to a straight vertical line. If you find a perfect straight line within options labelled from 10 to -10, enter that number into field 'Ink Skew' of the dialog window.

If none of the printed lines in perfectly straight, extrapolate from the samples given to find the number in between printed samples that would yield best results.

For example if sample at -4, and sample at -2 are both just slightly off straight, but all others are worse, then enter -3 in field 'Ink Skew'.



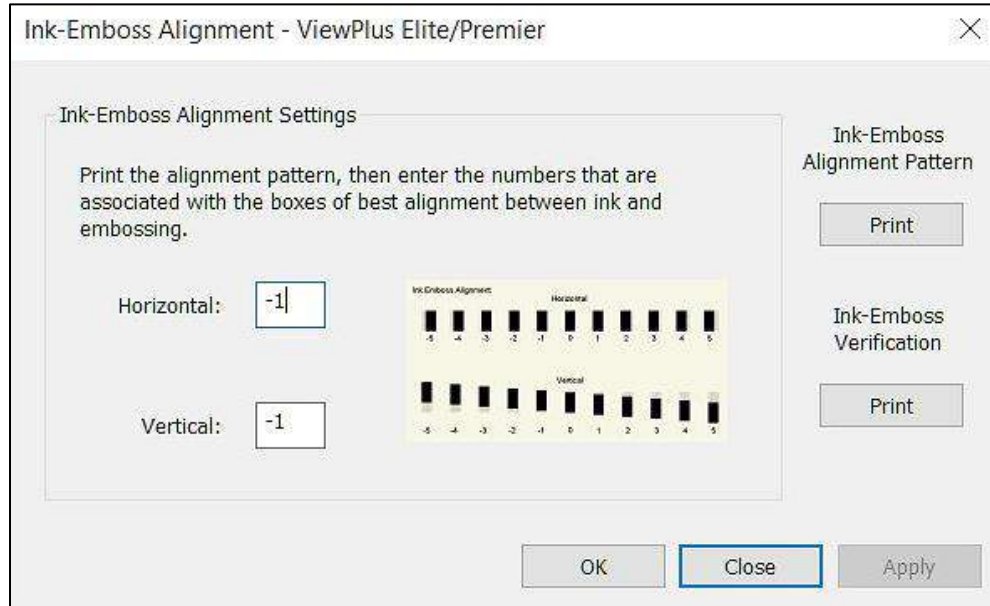
*Shows Ink Skew Alignment dialog window*

**Ink-Emboss Alignment** – This button is only available if a ViewPlus InkConnect is attached to the Elite or Premier. This function should be used if the print image does not line up with the embossed output. Use button 'Print' on 'Ink-Emboss Alignment' dialog window to initiate the printing of a test pattern.

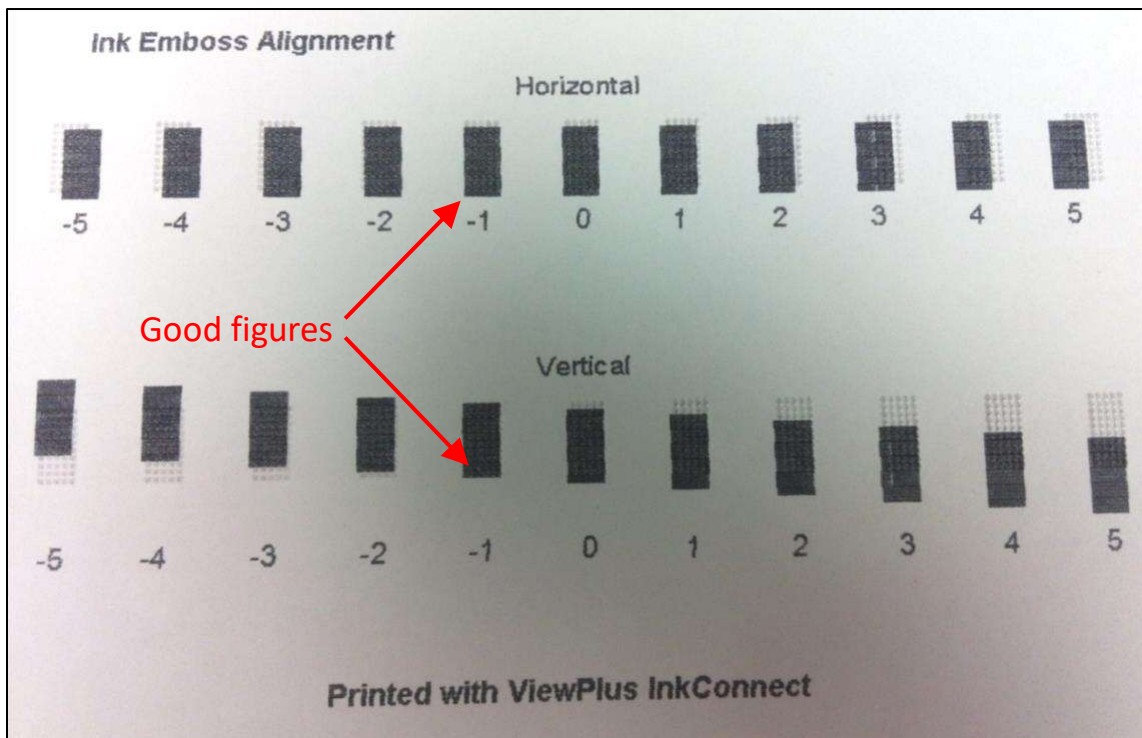
The print will show two sections to find adjustment values for horizontal and vertical alignment of embossed output against ink output. The horizontal pattern section shows a series of 11 ink rectangles overlapping 11 embossed rectangles. Find the rectangle, where ink and embossing are overlapping best in horizontal direction. Enter the number of this rectangle in field 'Horizontal' of 'Ink-Emboss Alignment' dialog window.

The vertical pattern section also shows a series of 11 ink rectangles overlapping 11 embossed rectangles. Find the rectangle, where ink and embossing are overlapping best in vertical directions. Enter the number of this rectangle in field 'Vertical' of 'Ink-Emboss Alignment' dialog window.

Note: Values between -10 and 10 are valid to use for either horizontal or vertical setting. If none of the rectangles show good overlapping in sample print, integer values not shown on page within this range may be entered. Verify your selections by printing an ink-emboss alignment verification page and checking the ink-emboss alignment of the graphic.



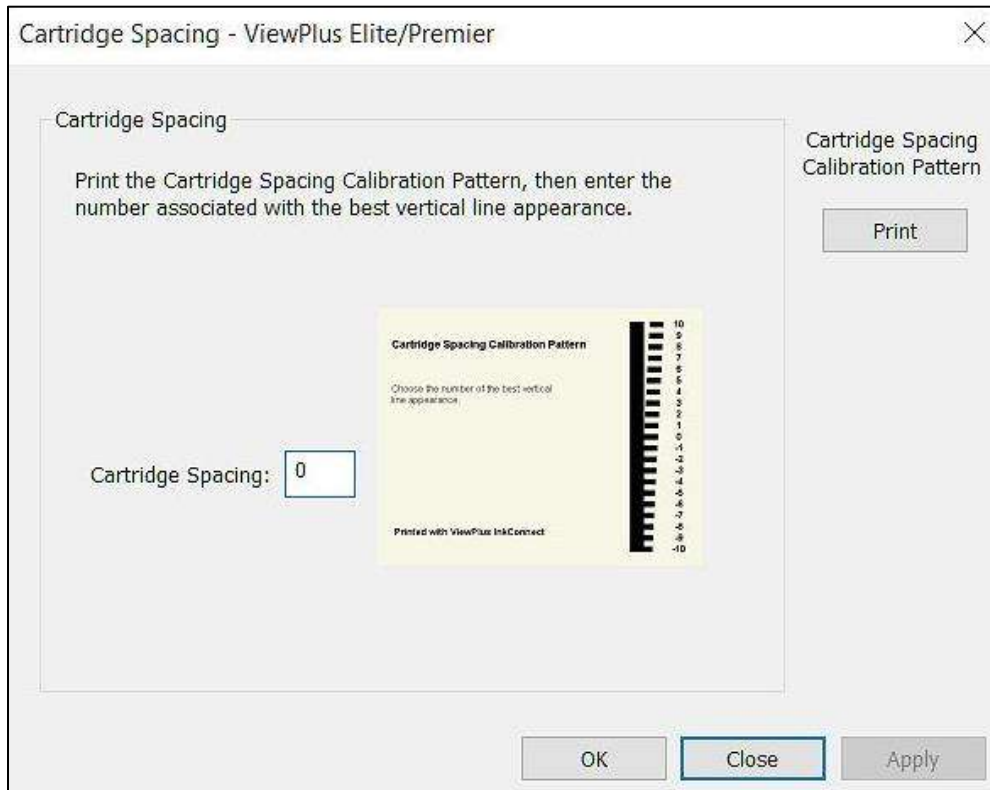
*Shows Ink-Emboss Alignment dialog window*



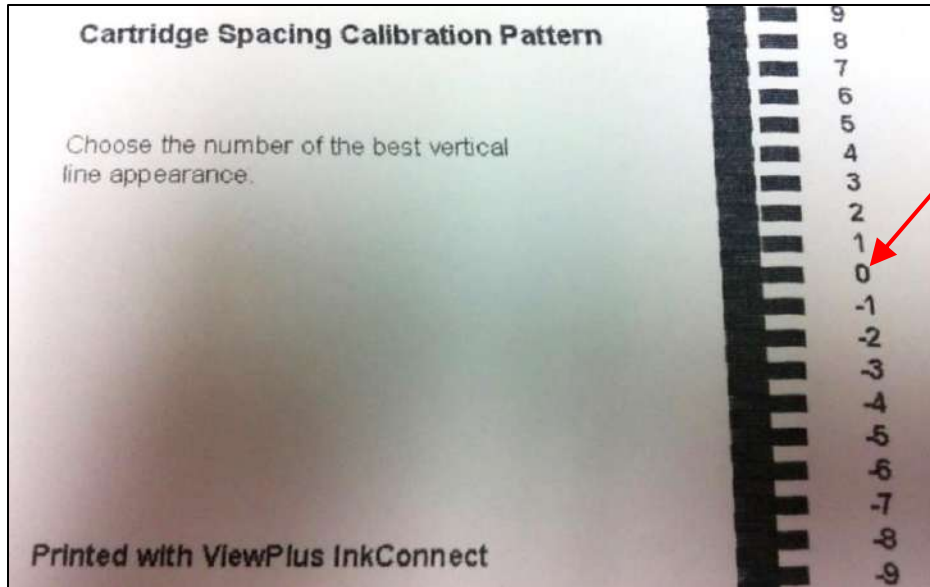
*Shows printed test pattern*

**Cartridge Spacing Calibration** – This button is only available if a ViewPlus InkConnect is attached to the Elite or Premier. This function should be used if there is an apparent gap or overlap in the area printed by the two ink cartridges (for example, if a horizontal line printed all the way across a page has a small area that is either blank, or darker than the rest of the line). Use button 'Print' on 'Cartridge Spacing' dialog window to initiate the printing of a test pattern.

The spacing calibration pattern shows a fat black column printed with 21 rectangles to the right at varying distances from the column. One of these rectangles will touch but not overlap the edge of the column. Enter the number to the right of the rectangle that just touches in field 'Cartridge Spacing' within the dialog window.



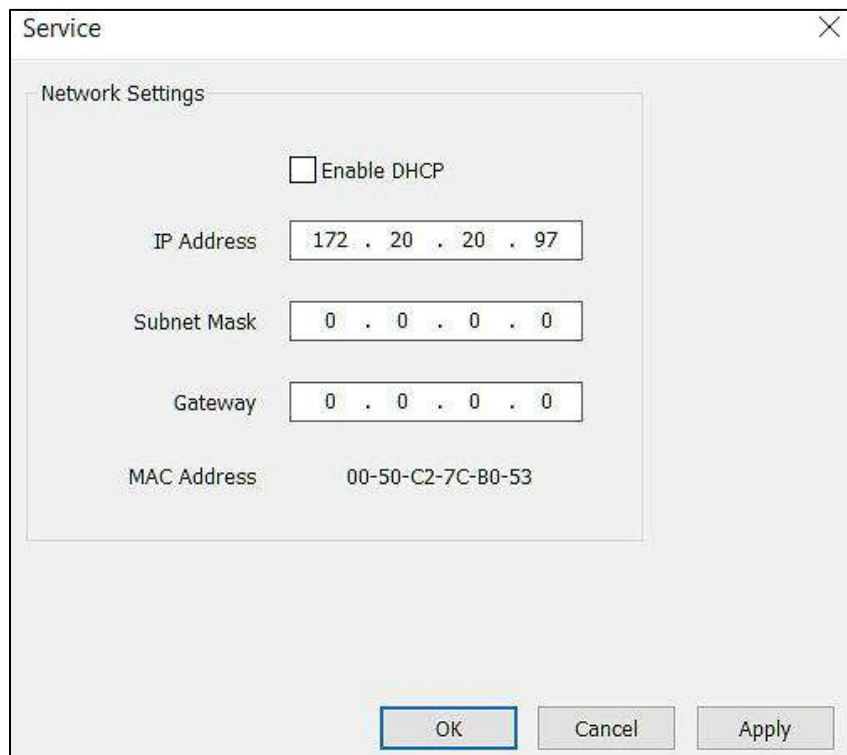
*Shows Cartridge Spacing dialog window*



*Shows printed Cartridge Spacing test pattern*

- **Network Settings**

**Ethernet Settings** – This button opens a dialog displaying the network information for the embosser, including the MAC address, which was set at factory. Use DHCP option, or enter static IP address depending on your custom network configuration.



*Shows Network Settings dialog window*

- **Print Test Page**

Using this button will initiate the printing of a test page on your connected embosser.

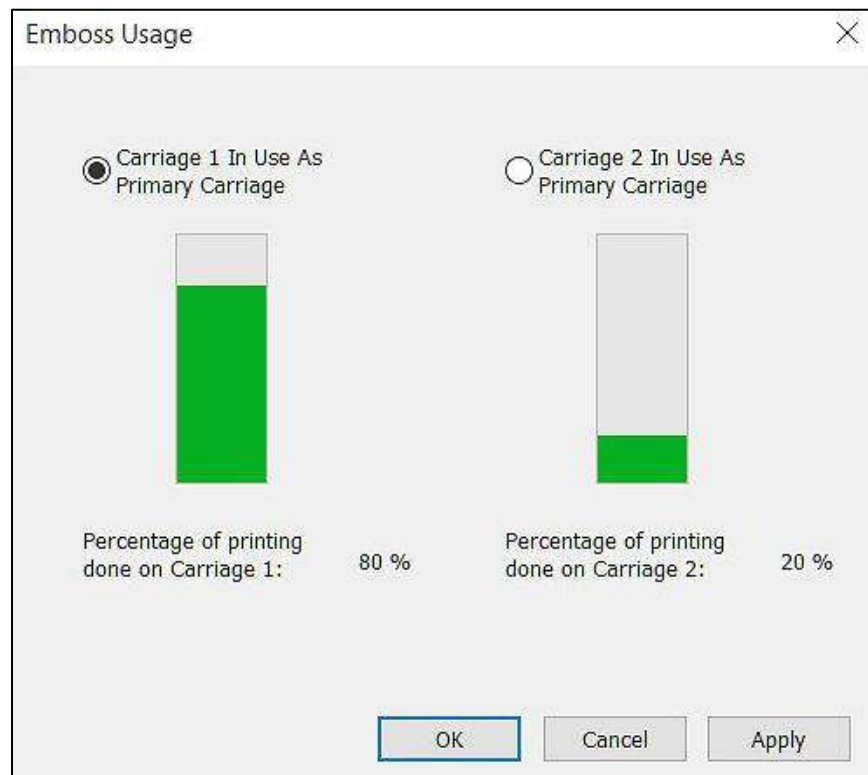
- **Printer Usage**

**Check Ink Cartridge Level** – This button is only available if a ViewPlus InkConnect is attached to the Elite or Premier. It brings up a dialog showing approximately how much percentage of ink fill is left in each of the black ink cartridges of the InkConnect.

**Check Emboss Usage** – This button opens a dialog displaying embosser usage information. It includes the percentage of total printing that each of the two carriage has performed so far. It also indicates which carriage is set as the "primary carriage". The primary carriage will perform all single sided printing, and when printing double-sided, the "front" sides of the pages, usually the odd-numbered pages in the document, will be embossed by primary carriage.

Carriage 1 produces dots protruding to top when paper exits the embosser. Carriage 2 produces dots protruding to bottom on paper exit.

If one carriage gets much heavier usage than the other, it might be of advantage to switch primary carriage to the other one.



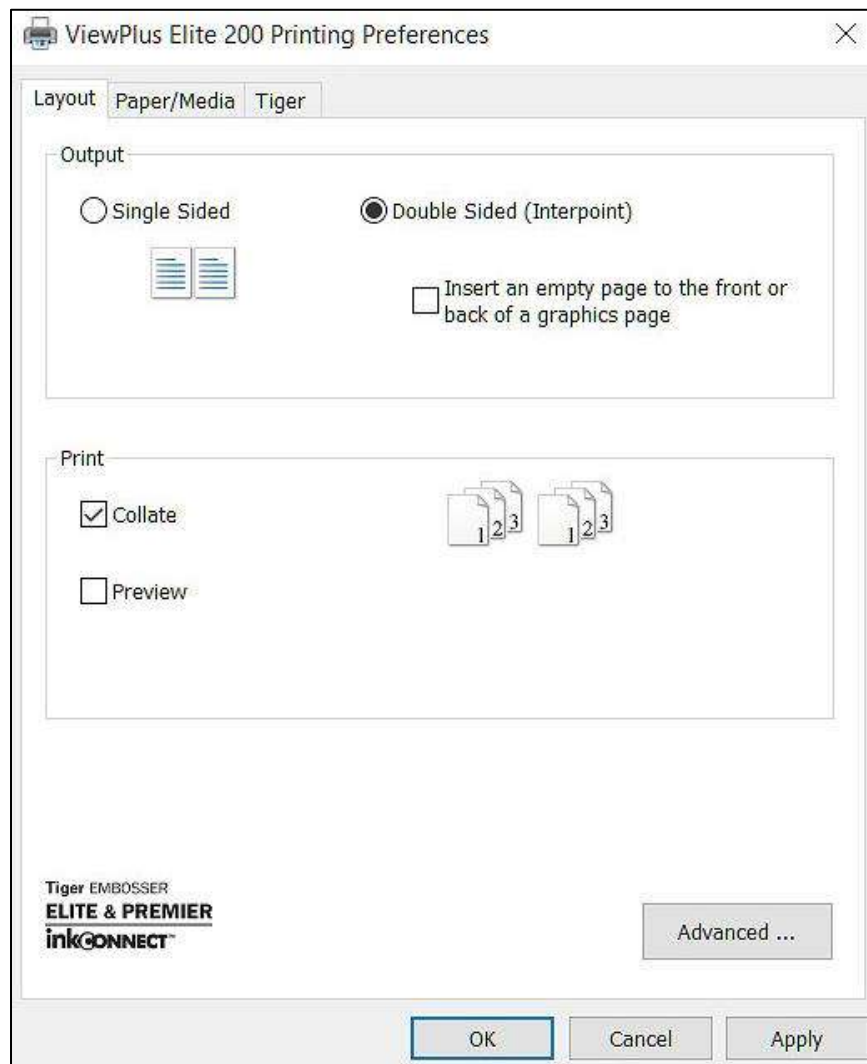
*Shows Emboss Usage dialog window*

## C. Printing Preferences

The Printing Preferences contain settings for printing from Windows programs to your VP Elite or Premier, which will affect the output of individual print jobs. To open the printing preferences dialog, choose the 'Preferences...' button on the 'General' tab of the 'Printer Properties' dialog.

Another option to access printing preferences is to choose 'Printing Preferences...' from Window system control panel for 'Devices and Printers' from context menu of the Elite, or Premier printer.

In addition, printing preferences are accessible next to printer selection from standard Windows print dialog when printing from most programs.



*Shows Printing Preferences Dialog - Layout tab*

The printing preferences dialog will show three tabs. See description of preference settings options from each tab in the following.

## C.1 Layout tab

The Layout tab contains options pertaining to the page layout of the document to be printed.

- **Output**

**Single Sided** – Select this option if you do not want the back sides of the pages printed.

**Double Sided (Interpoint)** – Select this option if you want the back sides of the pages printed. If Double Sided (Interpoint) is selected, the following option also becomes available:

- **Insert an empty page to the front or back of a graphics page** - Select whether to insert a blank page on the back side of pages that contain graphics. Do not select this option if you have already inserted blank pages after graphics pages in your document.

- **Print**

**Collate** – When the collate box is checked and multiple copies of a document are printed, one complete document will be embossed at a time. If the collate box is left unchecked, all copies of each page will be embossed before embossing of the next page in the document begins.

**Preview** – If this option is checked, a screen preview of the embossed document will be shown in Tiger Viewer instead of sending the hard copy output directly. If you are satisfied with the preview, choose the print option again within Tiger Viewer to forward the print job to the embosser. Tiger Viewer also allows to save the output to a print file (PRN file), or to cancel the print action.

- **Advanced**

This button brings up a dialog containing advanced user options. In this case it is only one option:

**Orientation - Rotated Landscape:** When checked, this option rotates pages in landscape orientation by 180 degrees. When using endless tractor paper, this option will help printing banner documents in correct order continuously across multiple pages.

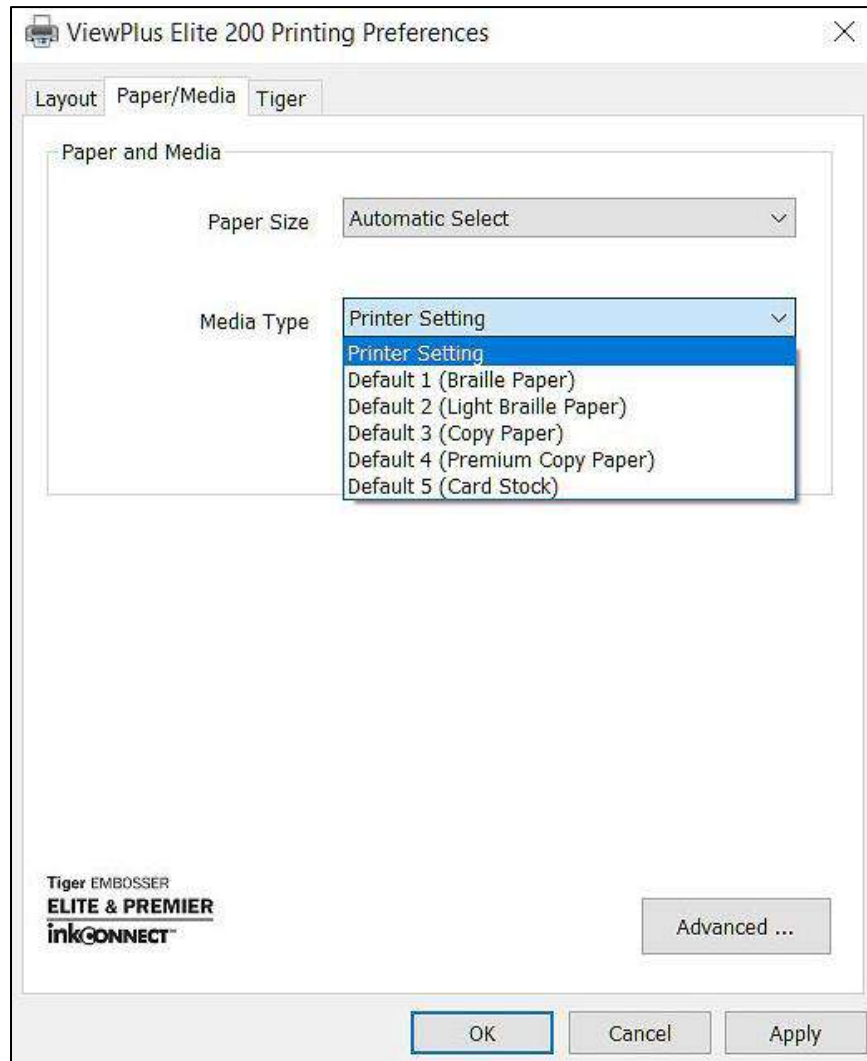
## C.2 Paper/Media tab

The Paper/Media tab contains options related to the type of paper or media being used for printing.

- **Paper and Media**

**Paper size** – If page layout from your application meets physical paper size of paper loaded to the embosser, setting 'Automatic Select' will be fine. 'Automatic Select' will allow the application you are printing from to set the correct paper size for you. If your physical paper size of material loaded to the

embosser differs from applications page layout information, choose the setting here that matches your physical size of loaded print media (paper).



*Shows Printing Preferences Dialog - Paper/Media tab*

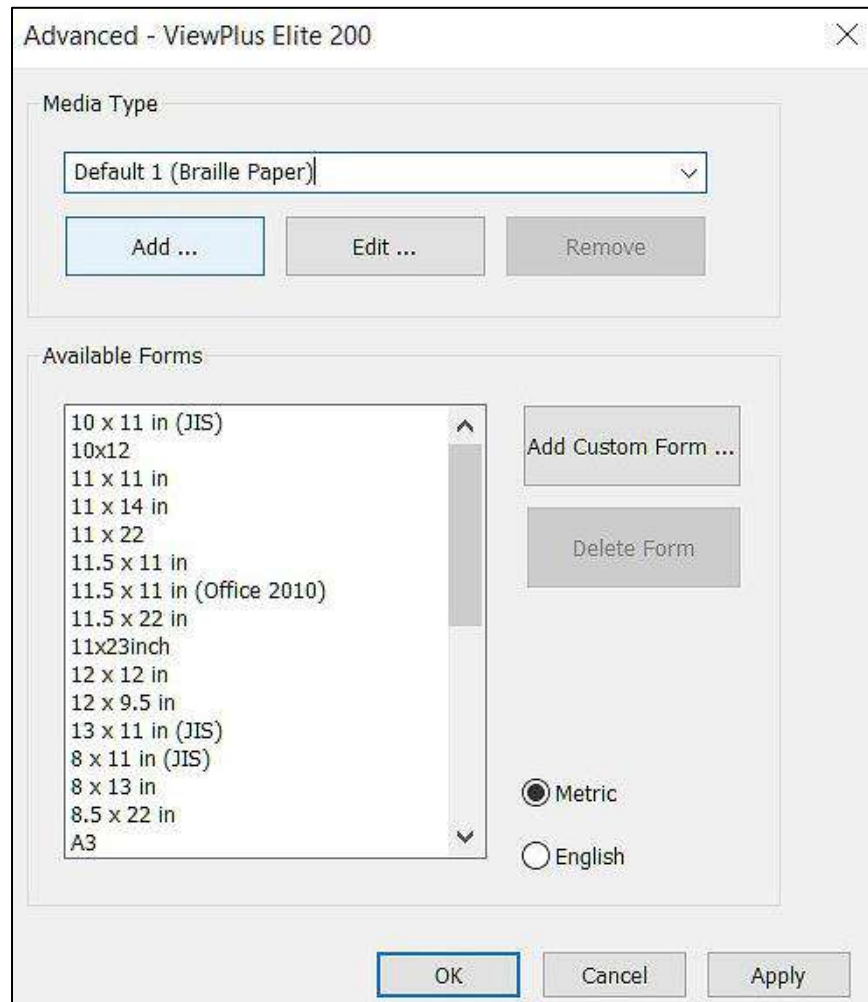
**Media Type** – Media Type setting defines embosser punch force being applied to form tactile dots into the paper (print media). The stronger the media, the higher the punch force needs to be to form readable dots. A list of presets for certain media types is available. Select the name of paper type that would describe your print media best. If you don't get satisfactory embossing results, adding a custom media type might be necessary.

See description of 'Advanced...' option below to learn about adding custom media types.

**NOTE: WHEN CHOOSING MEDIA TYPE 'Printer Setting' HERE, THIS WILL REFER TO MEDIA TYPE SETTING FROM PRINTER PROPERTIES DEVICE SETTINGS TAB AS EXPLAINED EARLIER IN THIS DOCUMENT (section B.1 above).**

- **Advanced ...**

This button brings up a dialog containing advanced options to add custom paper sizes, or media type settings.

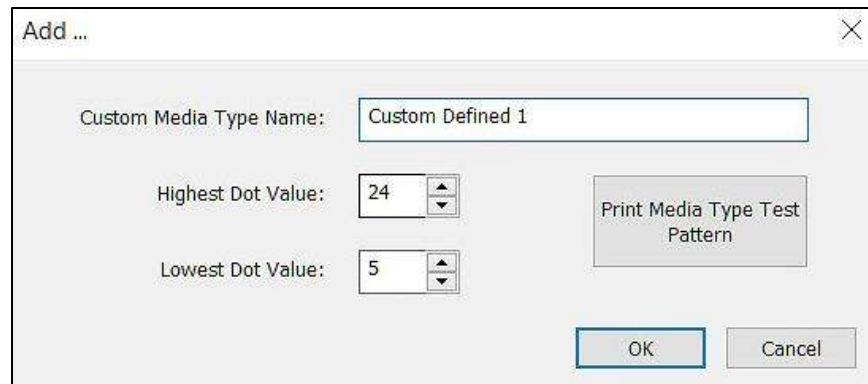


*Shows Advanced options in Paper/Media settings*

- **Media Type**

**Add** – Use this button to start the process of adding custom media type. It will bring up yet another dialog. A default custom media type name will come up, but feel free to edit within name field.

Two values have to be specified, 'Highest Dot Value', and 'Lowest Dot Value'. These values will define the maximum, and minimum punch force to be applied to highest, and lowest tactile graphics dots. All other dot heights will be extrapolated from these two numbers.



*Shows Add Media Type dialog*

**Edit** – Selecting a media type from the drop-down list and choosing 'Edit...' will allow you to edit that media type. The same dialog will appear as from 'Add' option. Note: Default media types can not be edited, but you can view high and low dot value within next dialog. This might be helpful to know which values to use for a custom media type.

**Remove** – Selecting a media type from the drop-down list and choosing 'Remove' will delete that media type from the list. Note: Default media types can not be removed.

- **Available Forms**

Selecting a paper size from the list will show the paper dimensions in selected units of measure to the right.

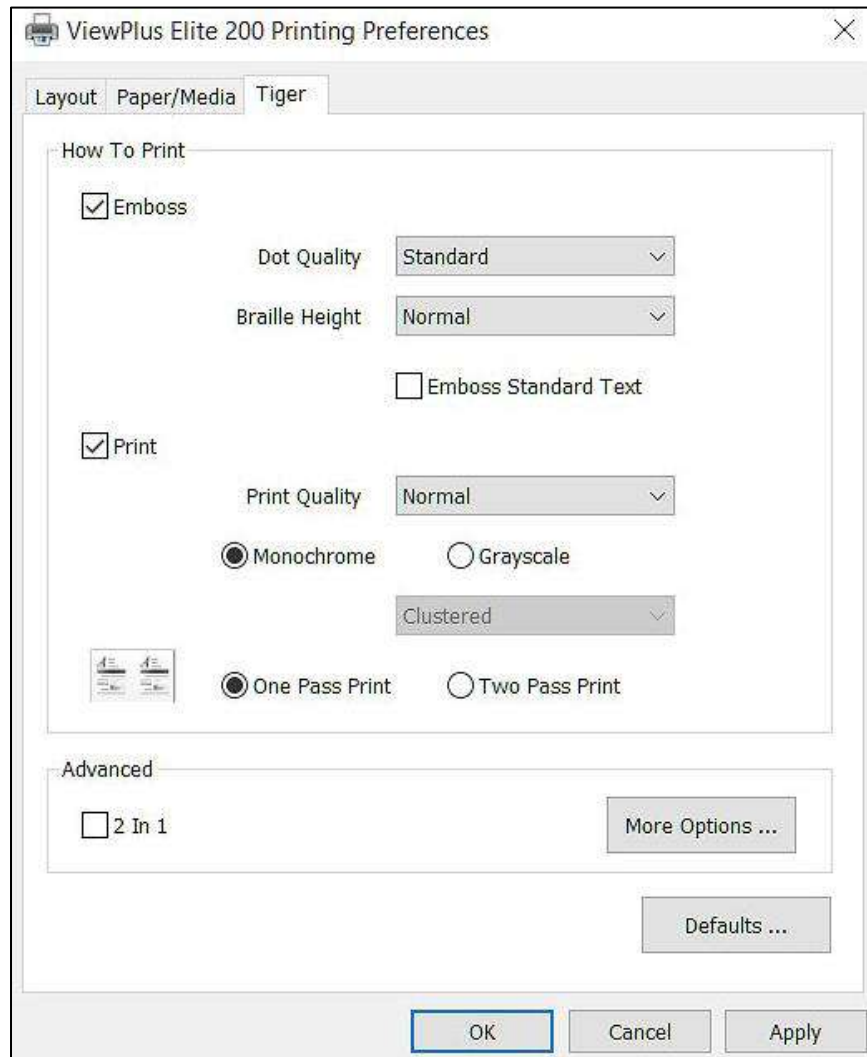
**Add Custom Form...** – This button will allow you to define a new paper size. Note: Paper sizes wider than 12 inches may not be added.

Within the next dialog, specify the desired name for your new paper form, and dimensions in width and height given by numbers of selected units of measure, metric or English.

**Delete Form** – Custom forms can be deleted again using this button after selecting corresponding form name in the list.

### C.3 Tiger tab

The Tiger tab contains controls for Braille and tactile graphics print output as follows.



*Shows Tiger Tab*

- **How to Print**

- **Emboss**

Only if this option is checked, emboss output will be created. In combination with InkConnect it might be unchecked to produce ink print only.

**Dot Quality** – Select 'Standard' or 'Best'. Printing with standard dot quality is the faster option. Selecting best dot quality causes the printer to punch each dot twice, leading to rounder, smoother dots.

**Braille Height** – Select 'Low', 'Normal' or 'High' for Braille dot height. Normal dot height sets the Braille dot at same height like the highest graphics dots. Adjust the Braille dot height higher or lower to suit the reader.

**Emboss Standard Text** – When this is checked, standard text that is not translated to Braille will be embossed as image of the characters. This is helpful in combination with large font size to create raised letters that can be recognized on touch. When doing so, it is recommended to change the font color to grey instead of black since the paper might be getting torn embossing solid black.

- **Print**

This section is only available if a ViewPlus InkConnect is attached to the Elite, or Premier embosser. Only if this option is checked, ink print output will be created.

**Print Quality** – Select 'Draft', 'Normal' or 'Best'. Draft is the fastest option, Normal is standard and Best produces the nicest-looking print output. Please note, that higher quality print option consumes more ink and takes longer to print.

**Monochrome/Greyscale** – This option defines the color processing to yield black and white printing.

When choosing Monochrome, colors will be reduced to only black and white. Lighter colors will not print, but areas will remain blank on ink output. Darker colors will all convert to black print.

When choosing Greyscale, shades of grey will be created by different density of the black printing. Greyscale offers further options to define the pattern of ink distribution, 'Clustered', 'Ordered', 'Diffusion 1', 'Diffusion 2', and 'Random'.

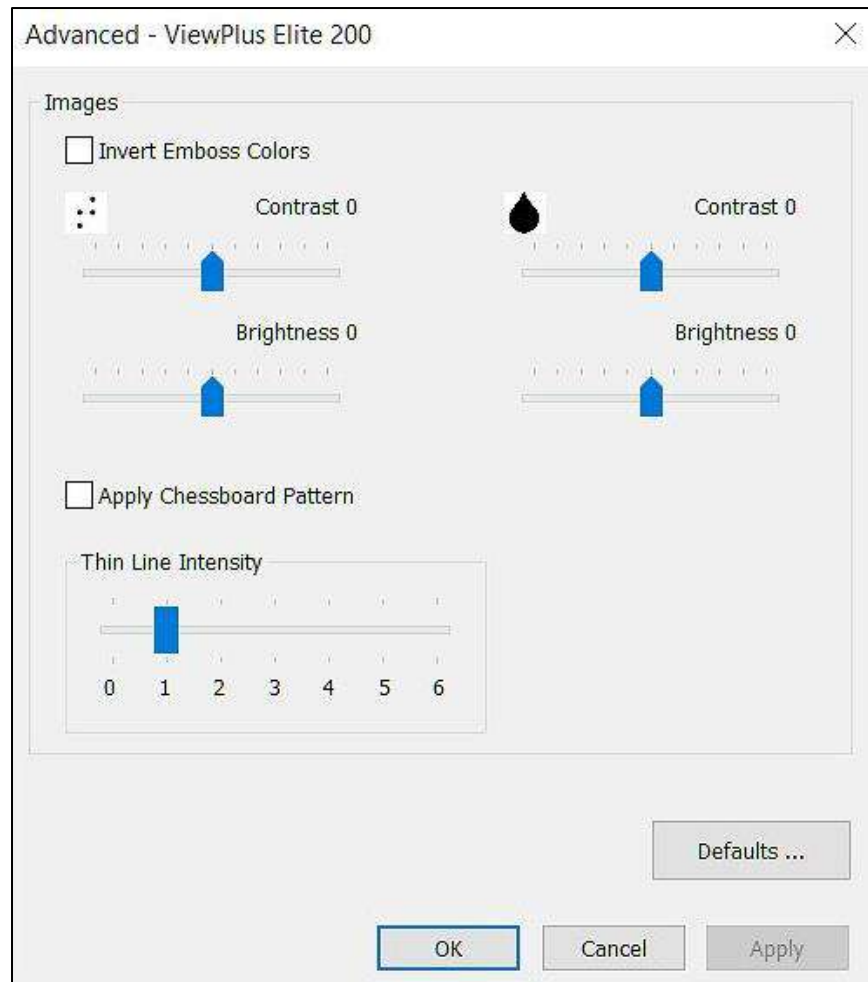
**One Pass Print/Two Pass Print** – This option is only available when printing Double Sided (Interpoint). Selecting 'One Pass Print' will place the ink print text for both sides of the paper in two columns on just the front page, which requires the paper to travel through the printer only once. Selecting 'Two Pass Print' will place the ink print accompanying each side of the paper, requiring the paper to travel through the printer twice since ink printing is only possible single sided. Therefore, the user will need to tear off the paper after initial print which yield interpoint braille, but only single-sided ink. Then load the paper back to the embosser with ink print on bottom side. A dialog at the computer screen with ask for confirmation before the print job is continued, now only ink printing second side to complete the print job.

- **Advanced**

**2 in 1** – This option is only available if a ViewPlus InkConnect is attached to the Elite, or Premier. When this option is checked, the printer will generate embossed output from every odd page of the electronic document, and ink print output from every even page of the electronic document. The resulting output will combine two pages of the electronic document to one page on paper. This is helpful when you wish to have the embossed page show different data than the print page (for

example, if you wish to simplify a complex image on the embossed page, but retain the original detail on the print page).

**More Options** – Selecting the 'More Options...' button brings up a new dialog with the following options.



*Shows the More Options dialog window*

- **Images**

**Invert Emboss Colors** – Check this option if you want colors to emboss inverted, meaning lighter colors will emboss in higher dots, and darker colors will emboss in lower dots.

**Contrast** – This is separately available for emboss output and ink printing. The default setting is 0. The range is from -100 to 100. By increasing the contrast, light colors get lighter and dark colors get darker when processing printer output.

**Brightness** – This is separately available for emboss output and ink printing. The default setting is 0. The range is from -100 to 100. Increasing the brightness can be useful to increase the intensity of all the colors. This option is most often used with images in which lines are thin and light.

**Apply Chessboard Pattern** – When this is checked, the printer will emboss graphics with every second dot only, resulting in 10 dpi resolution instead of 20 dpi. With every new line, dots are being placed underneath the spaces of the previous line, which will show like a chessboard pattern. Applying chessboard pattern will help determine tactile differences in dot heights between filled areas.

**Thin Line Intensity** – This will increase the weight on lines when embossing. Sometimes lines are too thin to even result in one embossed dot thickness on printer output.

- **Defaults**

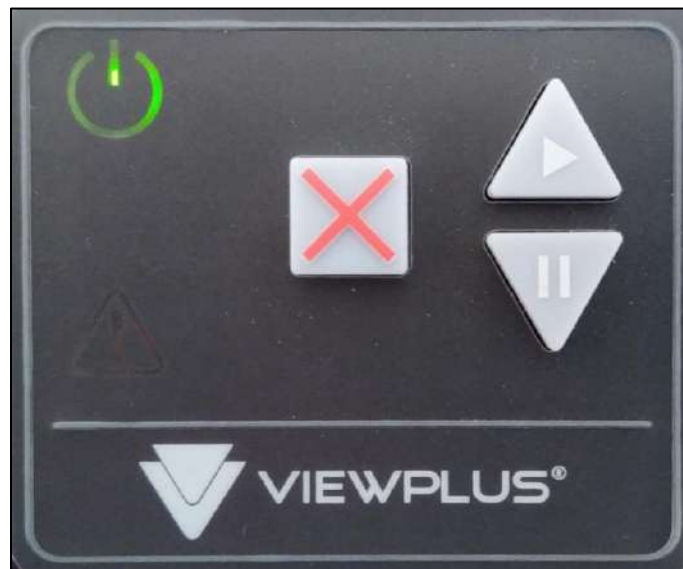
The 'Defaults...' button will restore all settings on the Advanced dialog to their default values.

- **Defaults**

The 'Defaults...' button will restore all settings on the Tiger tab to their default values.

## V. Operator Panel

### A. Functions



*Shows the operator panel*

*(The buttons are described from left to right order.)*

- **Cancel** – This button is square with a raised X on it. Pressing this button during printing will stop the print job, or it can clear minor error status.
- **Resume** – This button is triangular shaped pointing upwards, like an up arrow. It has a "play" symbol printed on it. Pressing this button will resume a paused print job.


When no print job is active, tapping this button will move paper to the top of form position, and holding the button will move paper forward continuously.

Holding down this button on power up will initiate the embossing of a test page. The printer will load paper and emboss a single page which will test both embossing printheads.

- **Pause** – This button is triangular with one point oriented down, like a down arrow, and has a pause symbol printed on it. Pressing this button during a print job will interrupt the embossing. Continue the embossing action by pressing the resume button, or press cancel to abort the print job.

When no print job is active, tapping this button will move paper to the top of form position, and holding the button will move paper backward continuously.

## B. Status Lights

- **Green light (power symbol)** – This light is on when the embosser is powered on, and ready to receive data. It is blinking if the embosser is just starting up, or if it is busy receiving data.
- **Red light (warning symbol)** – This light is blinking when the embosser's housing lid is open, or when  an error occurs during printing. The specific errors are: out of paper, paper jam, embosser head position error, housing open, power fault, or corrupt print data. To clear the error status warning light, press the cancel button.

## C. Error Alerts

### Computer screen error alerts

During printing, the printer driver is monitoring the status of the print job. If problems occur during printing, the embosser will inform the user of the error by showing a dialog box on the screen. This will only happen if the embosser is connected locally to the computer via USB, or if it is connected to the network through its on-board LAN port. This will not happen with embossers networked through print servers.

Additionally, the VP Elite/Premier is able to indicate status by audio alert as described below. The audio tone sequence for each described error status is given in brackets. This tone sequence is repeated from the embosser every ten seconds in case of such error status.

- **Paper Out** – (High-Low) Load new print media to the embosser and press the cancel button to clear the error status warning. Now any print job, which was sent but not printed before the error occurred, should be resent.
- **Paper Jam** – (High-Low-High) Remove the jammed paper (see section VI.B below), and press cancel to clear the error status warning. Now any print job, which was not printed before the error occurred, should be resent.
- **Alignment error / Emboss head stalled** – (High-High-Low) Press cancel to clear the error status warning. Try printing again. Cleaning the inside of the embosser as far as can be reached using a vacuum cleaner, or blowing out with canned air might help. If the problem persists, contact ViewPlus Support.
- **Print data error** – (Low-High) Press cancel to clear the error status warning and send the print job again.
- **Carriage stalled** – (High-Low-Very Low) Turn the embosser off and on again. If this does not clear the error message, contact ViewPlus Support.
- **Housing open** – (Low) Close the lid of the embosser and continue operation. If error status warning does not clear, make sure the lid is closed securely against the main housing.
- **Power fault** – (Long Low) Turn the embosser off and contact ViewPlus Support.

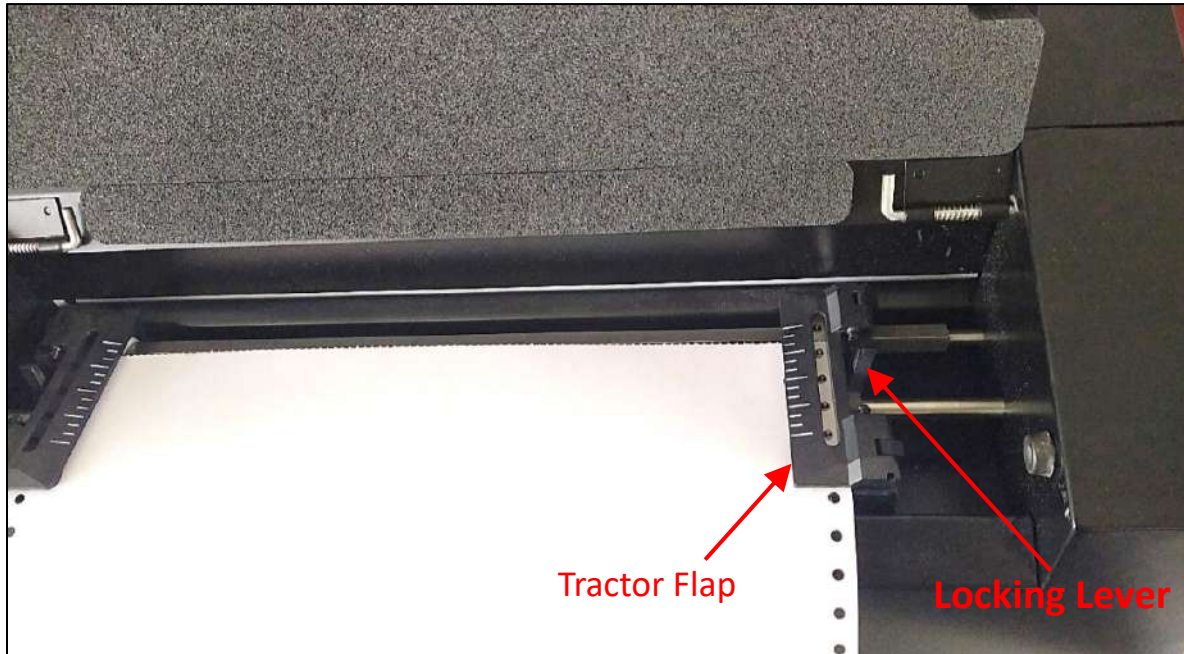
If you experience any other error, you will likely hear a sequence of three high beeps. To get more information about the error, go to the Windows printer properties dialog of your Elite or Premier embosser, and find the specific error message in the printer status box on the Service tab.

It would be helpful to give as much information as possible about error behavior and actions that yield to error behavior, and about error alerts, or messages to ViewPlus support in case you need further help.

## VI. Paper Handling

### A. Paper Loading

Your ViewPlus Elite or Premier comes with a front-loading tractor feeder that takes media from four to twelve inches wide. Follow the instructions below to load tractor feed paper:



*Shows paper load area*

- Open the paper cover by lifting the front edge and rotating it toward the back of the printer.
- Lift the tractor flaps on both sides to reveal the tractor teeth.
- Place the left side of the paper into the left tractor and close the tractor flap. Do not adjust the left tractor position. If necessary, adjust the right tractor position to fit into the right side of the paper:
  - Release the locking lever on the side of the tractor.
  - Slide the tractor to a position so it lines up with the holes in the paper.
  - Insert the paper into the tractor and close the flap.
  - Adjust the tractor so that the paper is tight.
  - Engage the locking lever.
  - Close the paper cover.

## B. Paper Jams

To check and clear paper jams please follow the steps below.

**Note:** Always pull the paper from the center of the visible side, or with two hands to distribute pulling evenly. This way it is less likely that the sheet will be torn into pieces which might be harder to remove.

- If the embosser is indicating a paper jam, turn the embosser off.
- Open the housing lid and check for paper inside. If there is paper present, in most cases it can be removed simply by pulling on one end of the paper.
- If the paper jam can not be cleared by pulling on one end of the paper, unplug the embosser from the wall, then open the paper cleanout under the housing lid.



*Shows paper cleanout under top housing lid*

- To do this, locate the thumb screws towards the back of the embosser on the left and right (they are attached to green metal parts). Twist the thumb screws counter-clockwise until the cleanout pops up slightly. Then lift and rotate the cleanout towards the front of the printer. With the cleanout open, try to free the paper.
- Once the paper jam is clear, close and latch down the cleanout (if opened), close the housing lid and plug the embosser back in (if unplugged).
- Turn on the embosser, and then reprint the document.

## VII. Braille, Translation and Printing

In general, the embossing technology will create a tactile representation of the screen image where darker colors will result in higher tactile dots and lighter colors in lower tactile dots.

Text will only print in Braille after it has been translated to Braille code and can be recognized as Braille text from the printer driver. In Windows applications, if the text is recognized as true text and not embedded as image, a non-contracted Braille output can be created by simply formatting the text to a Braille font as further described under B. below.

### A. ViewPlus Tiger Software Suite

Within MS Office Word, and Excel the ViewPlus Tiger Software Suite (TSS) provides direct tools for text to Braille translation in numerous languages and contraction grades. TSS includes easy translation of charts and graphs in MS Excel and provides further tools to easily create and edit tactile graphics originating from other Windows applications.

Please visit <https://viewplus.com/product/tiger-software-suite/> to find further information about the ViewPlus Tiger Software Suite solutions, including the TSS user manual.

### B. Fonts

Braille and Tiger screen fonts are Braille fonts that install with the installation of the ViewPlus embosser driver. They can be chosen from any Windows program that includes Windows font selection. But text has to be handled like true text, and not show as embedded image, which is the case in some PDF Editor programs, for example.

Braille and Tiger screen fonts appear as standard text characters on screen, but emboss in Braille dot patterns. When applying these fonts, each print character is converted to one Braille character that corresponds to the ASCII code of that print character. There will be no contractions, or translation of symbols in the Braille output.

It is very important to use the correct font size for the correct dot spacing to be printed for Braille fonts. For 8 dot Braille fonts, like 'Computer' Braille, the point size needs to be set to 36. Other Braille fonts, indicated through a '29' in their font name, need to be set to point size 29.

Text characters, written in standard print screen fonts, like 'Times New Roman', or 'Arial', will not appear on embosser output, unless 'Emboss Standard Text' option is checked within Tiger tab of printing preferences. In this case, letters will emboss in shapes of print letters, but font size has to be at least

something like 40 on Arial font before shape of print letters can be determined in tactile representation on embosser output.

## **C. Math and Braille**

Create braille math documents using the Tiger Software Suite and MathType from Design Science. Insert text, graphics and math equations directly into a Microsoft Word document and translate to braille in one easy step. Equations will appear in both braille and ink allowing sighted readers to follow along. More information about braille math can be found on the ViewPlus website.

## **D. Printing**

Once the printer driver is installed and printer properties are accessible, you are ready to emboss from any Windows program. For a general printing test out of MS Office Word follow these easy steps:

- Open the document to be printed in MS Word.
- Open the program's File menu and choose Print.
- On the Print interface, make sure the VP Elite or Premier is selected. The default printer properties settings should be fine, but feel free to select printer properties and check selections within printer properties dialog, like Tiger printing options. Click OK on printer properties dialog when you are finished.
- Please note that any printing options showing within print interface of MS Office Word will have priority over printer properties dialog settings if they don't match.
- Click OK, or Print to start the print job.
- When the printer is finished, press the up button on operator panel to move paper out to where you can tear it off, or just leave as it if you want to print the next job first.

In general, ViewPlus printers follow the principle "What you see is what you get". The screen image is converted to tactile resolution, and colors are converted to different dot heights on embossed output. Darker colors will be represented in higher dots (black = highest dot), and lighter colors will be represented in lower dots (white = no dot).

A knowledge base, and tutorials on how to use ViewPlus embossers with various applications can be found in Support section under [www.viewplus.com](http://www.viewplus.com)

## VIII. Software Packages

For pricing, ordering, and additional information on any of the following products consult the ViewPlus website [www.viewplus.com](http://www.viewplus.com) or your ViewPlus representative.

### A. Software Packages

- **Tiger Software Suite (TSS)**

The ViewPlus Tiger Software Suite (TSS) is the complete solution for producing Braille and tactile graphics by harnessing the full power of MS Word and Excel. The press of a button automatically converts and formats documents that were originally created for an ink printer.

Additionally, the Tiger Software Suite offers tools to ease creation and editing of tactile graphics.

- **MathType by Design Science**

MathType is an Add-in editor in MS Word for math equations. Equations can be entered using MathType editor and directly translated to LaTeX, Nemeth, or other Braille math using the ViewPlus Tiger Software Suite.

- **Accessible Graphing Calculator (AGC)**

The ViewPlus Accessible Graphing Calculator (AGC) is a self-voicing Windows application that provides access to scientific calculation and graphing for people who are blind or dyslexic. It includes a standard on-screen calculator and a powerful function evaluator as well as the capability of computing and viewing functions visually and as an audio plot. The audio tone plot gives AGC users access on a time scale comparable to access by people without print disabilities to visual plots on standard graphing calculators.

## **IX. Training, Warranty, Maintenance and Support**

For additional information about any of the below, please don't hesitate to consult the ViewPlus website [www.viewplus.com](http://www.viewplus.com) or contact your ViewPlus sales representative.

### **A. Training**

ViewPlus provides various training methods

- 1) Video tutorials/documentation downloadable from our website
- 2) Tutorial videos on ViewPlus YouTube-channel
- 3) Live on-line training sessions with a ViewPlus Support Specialist

### **B. Maintenance**

It is important to follow the safety instructions as stated under I.C.

Dot quality should be monitored; poor alignment of the hammer tips to the receiving dyes can cause permanent damage to the ViewPlus embosser.

Updates can be downloaded from the ViewPlus Technologies website. Please check the website occasionally for our latest developments, too.

### **C. Support**

In addition to support material on our website please do not hesitate to contact us for your technical support questions:

- Contact your ViewPlus embosser sales representative if you did not purchase directly from ViewPlus Technologies
- E-mail to [support@viewplus.com](mailto:support@viewplus.com)
- Call the ViewPlus support hotline at +1 (866) 836 2184, or the ViewPlus Technologies office at +1 541 754 4002 (Pacific Standard Time Zone).

### **D. Warranty**

For information on your product warranty, please visit our website and select the warranty details link under category support. Direct link: <https://viewplus.com/viewplus-support/warranty-details/>

#### **Extended Warranty**

For extended warranty options please contact your ViewPlus representative, or the dealer the embosser was purchased from.